

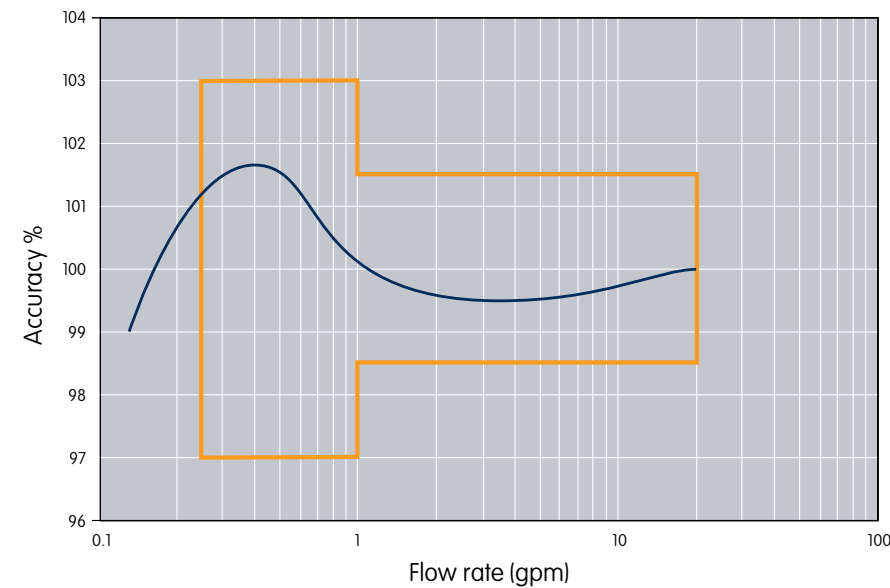
# Reliability by design

M700 multijet series



## High performance multijet meter

The M700 velocity type meters are the most advanced concept in multijet meters. The M700 not only meets the AWWA C708 standard requirements latest revision, it exceeds the AWWA standard for recommended maximum continuous flow. The M700's magnetic shielding and hidden calibration provide greater anti-tampering performance. Utilizing the world's No.1 selling multijet platform, the M700 integrates hydraulics and design to provide a multijet meter that delivers highly accurate performance, long meter life, easy maintenance and measuring stability.



### Designed for excellence

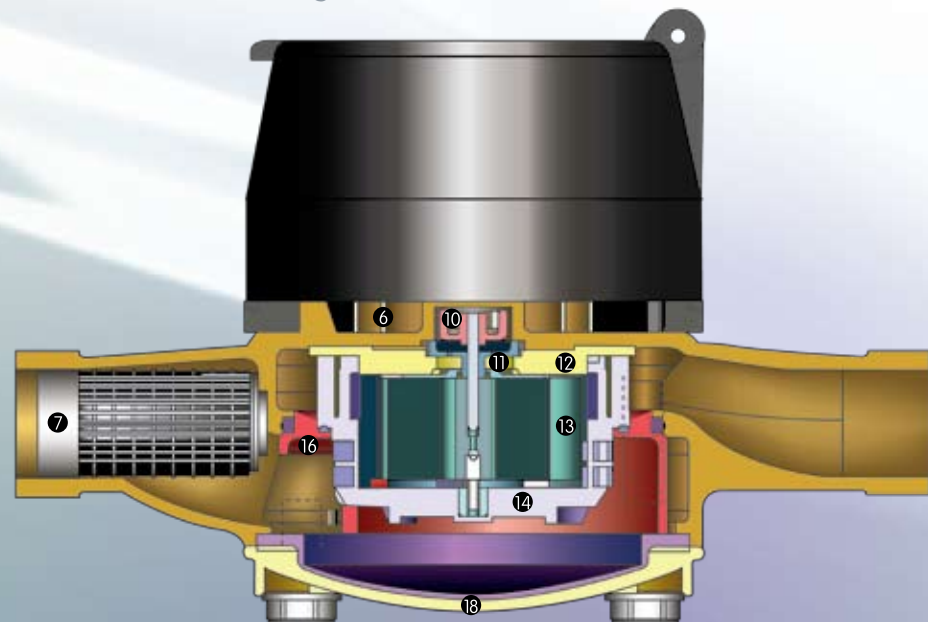
The M700's hydraulic design, with highly sophisticated damping features, is engineered for long term measuring stability in all water types. The combination of the measuring chamber and inlet basket strainer design insures long term hydraulic accuracy. The meter incorporates high quality materials that allows for low wear and long term low flow measuring stability.

The M700 is compatible with evolution™ AMI and other AMR/AMI devices.

The M700 provides longer meter life and long term accuracy.

## M700 cross section hydraulic

Meter shown: 3/4" x 3/4" short length



### 1 Multiple Lid Designs

Two lid versions are available, offering a lid for encoder registers as well as direct read registers. Lids protect register lenses from debris build-up, simplifying visual reading when required.

### 2 Full swing lid

Hinge allows lid to open 225° for maximum reading convenience.

### 3 Permanent Register Sealing

Proven copper can, tempered glass lens and rubber gasket sealing prevents moisture penetration.

### 4 Housing & Lid Options

Streamlined-profile register housing and lid are available in waterworks bronze or engineered polymer.

### 5 Improved Tamper Resistance

Inconspicuous tamper-resistant plug improves security.

### 6 Magnet Shield

Magnetic shielding provides better anti-tampering performance and covers the whole magnetic coupling. The magnetic shielding ring protects the wet and dry magnet. The upper bearing is positioned below the magnet, which keeps particles away from the magnet.

### 7 Inlet Basket Strainer

360° basket strainer allows for easy replacement and long term hydraulic accuracy even at a high degree of blockage.

### 8 Body Material Options

M700 meters are available in a choice of traditional waterworks or low-lead bronze.

### 9 Hidden Calibration

The hidden calibration screw reduces tampering risk, while allowing access for calibration, if necessary.

### 10 Magnet Carrier Assembly

Magnet runs inside the centered body surface. Magnetic coupling with magnetic shielding fulfills AWWA new meter accuracy while influenced by "KIWA" magnet.

### 11 Bearing Disc

The bearing disc is made of advanced engineering polymer with proven low wear properties. It protects the magnet from iron particles in the water network.

### 12 Damping Plate

Highly sophisticated damping features lead to controlled turbulences inside the measuring element.

### 13 Rotor Assembly

Rotor speed is transformed into volume by the register. Balanced rotor weight, magnetic coupling forces and low wear bearing materials keep the rotor moving at low flows.

### 14 Measuring Element

The water is directed through several symmetric jets through the measuring element to drive the rotor and to reduce the radial forces on the rotor bearings. The measuring element contains a stainless steel pivot with tungsten carbide ball for low wear, long term low flow measuring stability.

### 15 Cage O-Rings

The o-ring ensures the tight sealing of the calibration.

### 16 Cage

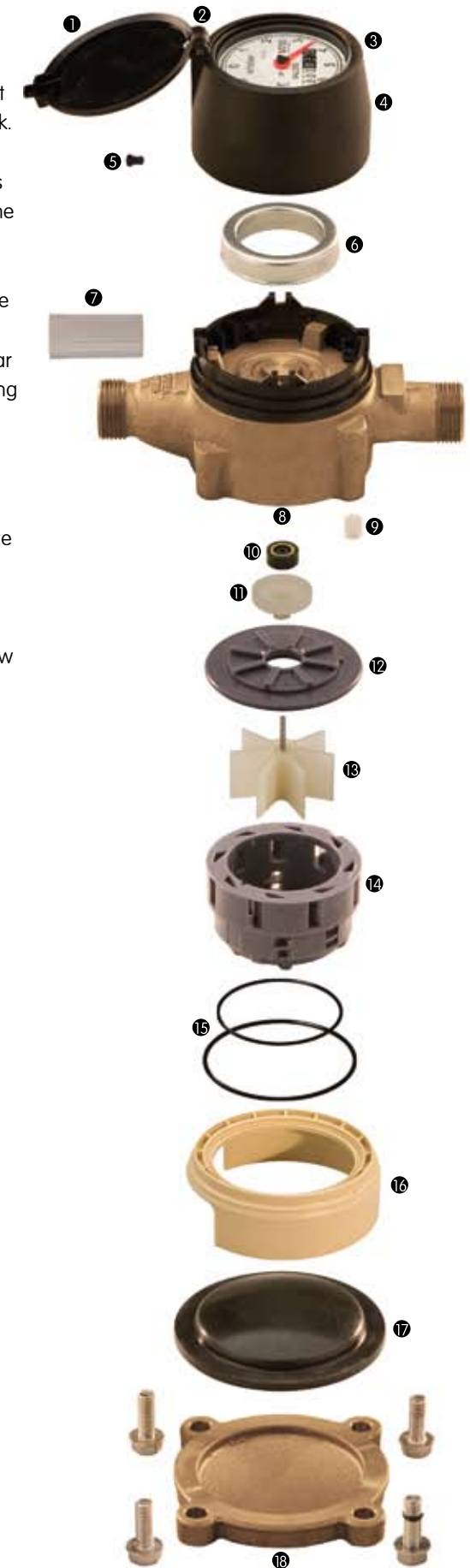
Polymer hydraulic cage for defined upstream conditions of the measuring element removes dependency of upstream conditions from the meter. Bypass calibration is separated from measuring element.

### 17 Corrosion Protection

All M700 meters are provided with stainless steel bolts with integral washers and full rubber bottom plate liners for isolation of the bottom plate from potable water.

### 18 Choice of Bottom Plates

Meters are available with a choice of polymer, traditional waterworks or low-lead bronze bottom plates for warm environments.



The M700 can be used in all potable water applications.

## About Elster AMCO Water, Inc.

Located in Ocala, Florida, Elster AMCO Water is part of Elster, the world's largest metering and smart metering system solution company. Elster AMCO Water is an industry leader in the development and implementation of innovative metering and system solutions and is committed to delivering superior customer service, quality products, solutions and services to the water utility industry.

United States - ISO 9001:2000 Registered  
Elster AMCO Water, Inc.  
P.O. Box 1852  
Ocala, FL 34478-1852  
T 800-874-0890  
F 352-368-1950  
watermeters@us.elster.com

Canada  
Elster Metering  
1100 Walker's Line, Suite 101  
Burlington, Ontario L7N 2G3  
T 866-703-7582  
F 905-634-6705  
watermeters@ca.elster.com

Caribbean  
Elster AMCO Water, Inc.  
P.O. Box 225  
Carretera 112 KM 2.3  
Isabella, PR 00662  
T 787-872-2006  
F 787-872-5427  
prwatermeters@pr.elster.com

Mexico  
Elster Medidores  
Calle Norte 35 No. 983-13  
Col. Industrial Vellejo  
Del. Gustavo A. Madero  
C P 07720  
T 525 55 368 4757  
F 525 55 368 4782  
amcowater@prodigy.net.mx

## About Elster

Elster has delivered over 1.5 million smart metering devices worldwide with systems located in North America, Central America, Europe, Australia, New Zealand and the Caribbean. Elster smart metering systems allow utilities to implement energy conservation measures, demand response programs, smart grid initiatives, and smart home solutions as well as achieve operational efficiencies resulting in significant value creation across the utility enterprise. Elster has over 7,500 staff and operations in 38 countries, focused in North and South America, Europe, and Asia.

[www.elsteramcowater.com](http://www.elsteramcowater.com)

Copyright © 2008 Elster AMCO Water, Inc. All rights reserved. No part of the publication may be reproduced in any material form without the written permission of Elster AMCO Water except in accordance with the provisions of the Copyright, Designs and Patents Act 1988.

evolution is a trademark of Elster AMCO Water, Inc.

The policy of Elster AMCO Water, Inc. is one of continuous improvement and the right is reserved to modify the specifications without notice.

Lit Ref: M700-100/09-08