

evoQ₄TM Remote Display



The evoQ₄ is a single meter that meets the needs of traditional turbine, compound, single jet and magnetic meters.

Specification

Operating temperature	-4°F to +140°F
Pulse output signal	Open drain N-channel Field Effect Transistor (operates like an NPN open collector transistor)
Maximum load current	20mA
Maximum load voltage	30V DC
Maximum distance between meter and remote	100 ft
Max. pulse transmitting distance	650 ft
Standard cable length	30 ft
Power	Battery matches the evoQ4 battery with an anticipated 10 year life
Environmental class	Sensor is rated IP 68.
Dimensions	3 5/8" L x 1 1/2" W x 6 3/8" H
Register options	Available in USG, CuFt, m3

*Note: IP63 rating means the display is dust tight and will withstand water spray up to a 60° angle. The remote display cannot be submerged.

Operation

The evoQ₄ remote display gives the customer the ability to display the net total reading from the meter in a more easily accessible location. The remote display is battery operated and reads the evoQ₄ via optical interface displaying the volume and flow in real time.

This remote display can be retrofitted in the field to the evoQ₄ meter at any time and provides simple plug and play operation.

Pulse output

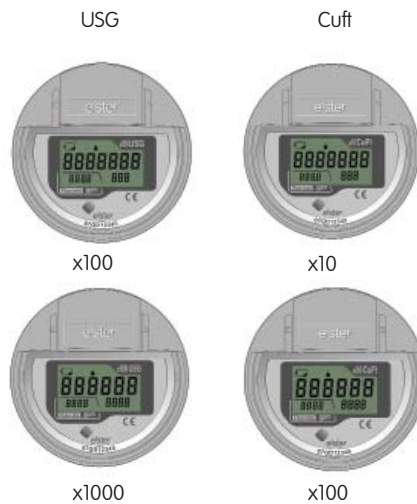
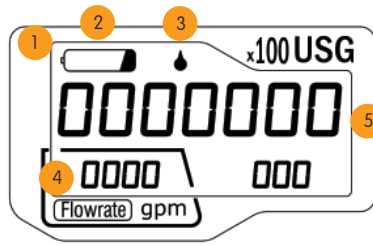
The evoQ₄ remote display features a dual-channel pulse output giving the customer the ability to connect to multiple data management outlets, AMR/AMI or data logger systems. The pulse output comes in a standard format but can be changed in the field to one of a number of pulse logic options.

LCD

Bright, large and easy-to-read LCD incorporating totalized volume and a reference flow-rate indicator. Alarm functions provide real-time status ensuring no loss in measuring continuity. The remote display housing provides protection from water and dust intrusion and meets a minimum of IP63 and NEMA-3R ratings.

Display functions

- 1 **Low-Battery** – The indicator will blink when the meter has approximately 3 months working life remaining.
- 2 **End of Life Battery** – Measurement stopped. The indicator will appear permanently when the meter life has expired. Final reading is displayed for 9 months.
- 3 **No-Water** – The indicator will blink when there is an empty pipe condition or no water in the meter.
- 4 **Flow Rate** – If water is flowing in the reverse direction a minus sign is displayed to the left of the value.
- 5 **Net Volume** – Any reverse flow will be subtracted from the volume display. The top line displays billable units with the multiplier shown in upper right corner. Measurement resolution is provided in the lower right for testing.



Elster AMCO Water, LLC
 1100 SW 38th Ave.
 Ocala, FL 34474
 United States
 T +1 800 874 0890 (US)

Elster Metering
 1100 Walker's Line, Suite 101
 Burlington, ON L7N 2G3
 T +1 866 703 7581 (Canada)

Elster AMCO Water, Inc
 Carretera 112 KM 2.3
 Isabella, PR 00662
 T +1 787 872 2006 (Caribbean)

watermeters@us.elster.com
 www.elsteramcowater.com

© 2011 by Elster. All rights reserved.
 The company's policy is one of continuous product improvement and the right is reserved to modify the specifications contained herein without notice. These products have been manufactured with current technology and in accordance with applicable AWWA Standards.

evoQ4RDa/ 03-11