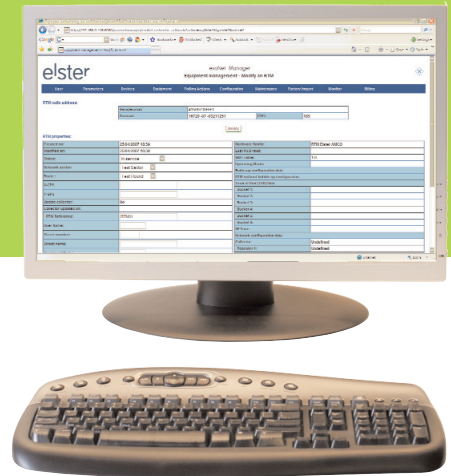


evoNet Manager

evoNet Manager offers a powerful middleware solution for remote evolution network monitoring, administration, and data management.



Network administration. By using Wavenis wireless infrastructure, Internet, and several wide area network (WAN) connectivity options, evoNet Manager gives you full two-way communications ability with all evolution Wavenis RTMs installed in the field. This allows you to actively monitor and manage every component of evolution AMI networks with a simple mouse click, and to listen for alerts sent by evolution RTMs.

2-way real time data monitoring and automatic remote reading. Meter data from the field is uploaded to evoNet Manager either by a variety of WAN connectivity options, or by synchronizing with handheld terminals used in walk-by rounds. All data monitoring and remote reading procedures can be fully automated and customized to meet your needs.

A secure link between field data and your databases. As a middleware application, evoNet Manager stores incoming RTM data in Oracle and MySQL databases that can be interfaced securely with your corporate information systems for full end-to-end data management. evoNet Manager can help your company both offer better customer service and save time and money on data monitoring and processing.

General features

- Immediate access to entire remote evolution wireless mesh networks
- Supports data transfer via several wide area network connectivity options
- Available for Windows
- Runs in Web and console modes
- Creates a safe link between data collection, network management and back-end systems
- Data logging retrieval from the network head-end/utility office
- Billing file formats - MVRS Interface, XML, or SQL
- Network and system maps

Network administration

- Easy, 2-way, end-to-end communications with all remote evolution RTMs over local and wide area network connections
- Manages evoGate gateways, evoHop range extenders, and evoRTMs from a centralized location
- Complete user account administration for all employee functions (system administrator, network administrator, hardware installation/configuration, data collection configuration, hardware installation, data collection agent)
- Remote RTM configuration and query

Automatic remote network monitoring

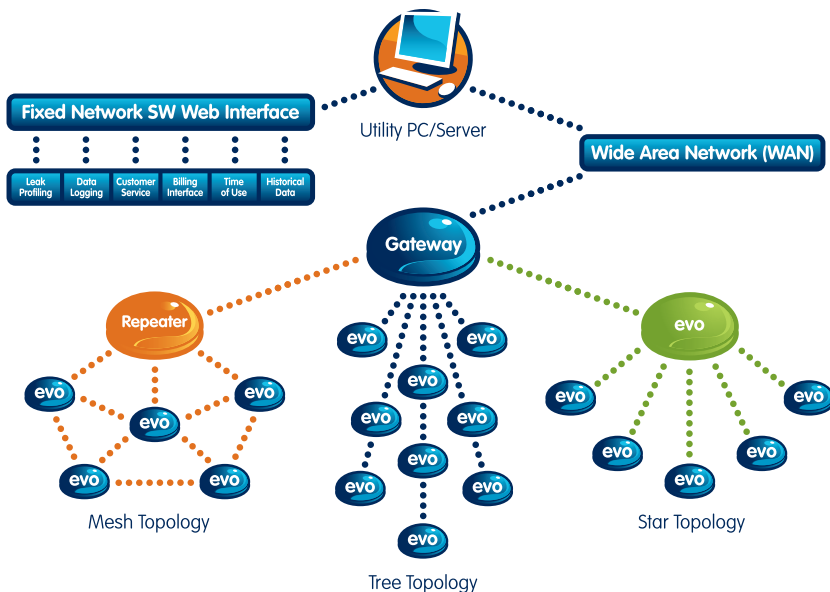
- Retrieve data from installed devices anytime, on demand via 2 coms
- Setup and monitor devices remotely
- Reading entire wireless mesh networks automatically
- Listen for spontaneous alerts from remote RTMs and infrastructure in fixed networks
- Ideal for full automation of remote evolution networks
- Configure walk-by monitoring rounds as backup

Database middleware

- Integrate automated evoNet Manager functionality in your customer service and billing procedures
- Data warehousing using Oracle and mySQL

Reporting capabilities

- Consumption
- High/low consumption
- Negative consumption
- Zero consumption
- Tamper
- Misreading
- Unassigned RTM
- Hard-to-read RTM
- Leak detection
- General readings
- General statistics
- Collector status
- Custom report can also be created based on historical data in the database using Crystal Reports



Elster AMCO Water, Inc.
PO Box 1852
Ocala, FL 34478-1852
USA

T +1 800 874 0890 (US)
T +1 866 703 7582 (Canada)
T +1 787 872 2006 (Caribbean)
F +1 352 368 1950

evolution@us.elster.com
www.elster-evolution.com

© 2008 by Elster. All rights reserved.

The company's policy is one of continuous product improvement and the right is reserved to modify the specifications contained herein without notice.

evoNet/01-08