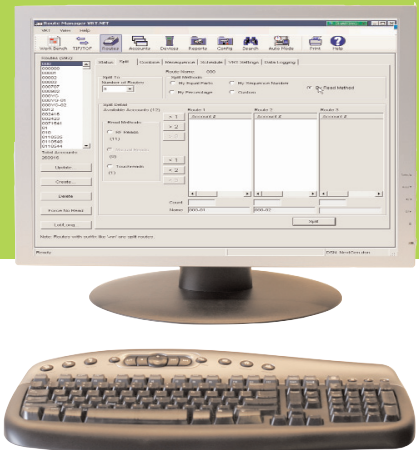


# evoLink™ Route Manager



**evoLink Route Manager integrates reading devices into an AMR system and provides the interface between the system and a utility company's customer information system (CIS).**

**Basic operation.** Data is exchanged between evoLink Route Manager and a CIS through files. The routes in a file being received by evoLink Route Manager can include manual electronic meter-reading routes and automated meter-reading routes.

Routes, account data and reading devices are all managed through evoLink Route Manager.

The Routes section includes a comprehensive set of features to manage routes including route splitting, the combining of split routes and resequencing.

The devices section is used to assign routes to various interrogation devices.

**Reading devices.** Route data is transferred between evoLink Route Manager and the evoDrive Mobile Transceiver using any removable media. With the Auto Mode section, routes can be transferred automatically between evoLink Route Manager and evoWalk hand-held data terminals.

Account information can be viewed and edited through Accounts section. This includes the manual entry of selected data. evoLink Route Manager maintains up to 13 months of meter-reading data that can be viewed in tabular graphical formats. evoLink Route Manager includes extensive search capabilities and reporting.

## Search and reporting features

- Skip code, second trouble code, trouble report, trouble message
- Inactive accounts nonzero usage report
- Active/inactive accounts support
- Active accounts zero usage report
- Import/export summary reports
- Meter reader summary and stats report
- Monthly reads chart and report

## Specifications

Operating systems	Windows 2000 SP3, Windows XP Professional, Windows Vista
CIS data-exchange files	Data can be exchanged between an utility's CIS and evoLink Route Manager in either the standard TIFTOF, VRTF, MVRS file format or the CIS file format using optional custom filter.
Database	ODBC-compliant MS SQL server, providing client/server access to the database locally or over a LAN. Data can also be accessed from Microsoft Office and third-party reporting tools.
Configurable operating parameters	<ul style="list-style-type: none"><li>• Level-based security</li><li>• Audit trail of operator activity</li><li>• Location-dependent access to data</li></ul>

Elster AMCO Water, Inc.  
PO Box 1852  
Ocala, FL 34478-1852  
USA

T +1 800 874 0890 (US)  
T +1 866 703 7582 (Canada)  
T +1 787 872 2006 (Caribbean)  
F +1 352 368 1950

[evolution@us.elster.com](mailto:evolution@us.elster.com)  
[www.elster-evolution.com](http://www.elster-evolution.com)

© 2008 by Elster. All rights reserved.  
evoLink is a trademark of Elster AMCO Water, Inc.

The company's policy is one of continuous product improvement and the right is reserved to modify the specifications contained herein without notice.