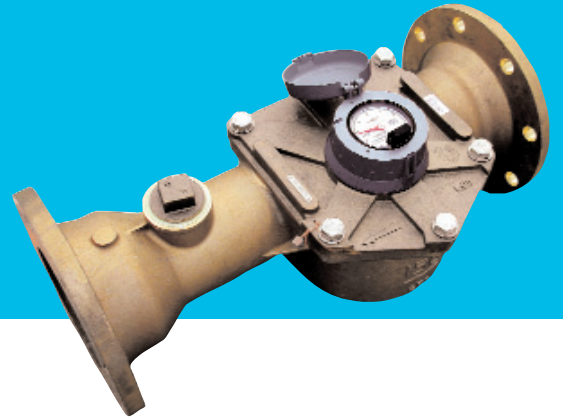


# S2000 Commercial Single-Jet Cold Water Meters

Sizes 1½", 2", 3", 4" and 6"



	Size:	1½"	2"	3"	4"	6"
<u>Accuracy (GPM)</u>						
95%-102% Minimum Flow		0.30	0.30	0.50	1.0	1.0
98% - 102% Normal Flow		1-90	1-180	2-400	3-530	3-530
Continuous Flow GPM		45	90	200	265	265
Maximum Flow GPM		90	180	400	530	530
Operating Pressure PSI		150	150	150	150	150
Operating Temperature °F		122°	122°	122°	122°	122°
<u>Register Type:</u>		Permanently sealed, direct read with pulse output				
<u>Register Resolution</u>						
US Gallons		100	100	100	100	100
Cubic Feet		10	10	10	10	10
<u>Capacity of Register</u>						
US Gallons (millions)		100	100	100	100	100
Cubic Feet (millions)		10	10	10	10	10
<u>Materials</u>						
Main Case		Bronze				
Top Cover Plate		Bronze				
Case Bolts		Stainless Steel				
O-Ring		Nitrile Rubber				
Calibration Vane		Stainless Steel				
Rotor Spindle		Stainless Steel				
Rotor		Thermoplastic				
Lower Thrust Pad		Tungsten Carbide				
Upper Thrust Pad		Tungsten Carbide				
Rotor Tip		Tungsten Carbide				
Diaphragm Spindle		Tungsten Carbide				

**Operation.** The S2000 Commercial Single-jet is designed for installations where large variations in flow can be expected. Water flows into the meter, passing through an inlet tube which directs it on to the faces of the offset rotor housed within the body, which acts as the measuring chamber. The rotor revolutions are proportional to the quantity of water passing through the meter.

**Compliance to Standards.** The S2000 fully complies with ISO 4064/BS 5728 Class C, exceeding Class C in horizontal position.

**Installation.** The meter should be installed according to good practices in the AWWA M6 manual and American Water Works Association Standard C712.

**Application.** The meter is used with Potable Cold Water up to 122°F (50°C) and working pressures up to 150 psi. The meter will perform with accurate registration of 100% ± 2% within its normal specified flow range. Accuracy tests are made before shipment. No adjustments need to be made before installation.



**Register.** The register is contained within a 90% copper seamless can which is oven cured to eliminate condensation. The 1/4" true tempered glass lens is secured in an "L" shaped gasket, then roll sealed. The applicable size, model, registration, and date code are printed on the calibrated dial face. S2000 meters are available with an Absolute Encoder register option. Refer to document ENC-UG-200 for absolute encoder register warranty information.

**Magnetic Drive.** The magnetic drive design facilitates coupling between the measuring chamber and the external register. The coupling is absolute at all rated flows.

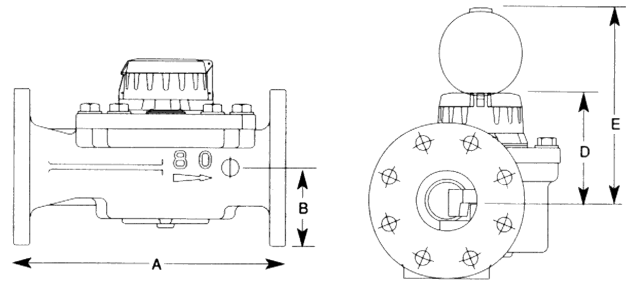
**Connections.** All S2000 meters are available with round flanged-end connections that conform to ANSI B16.1 cast-iron pipe flange, Class 125. 1 1/2", 2" and 3" sizes are provided with 4-bolt hole flanged ends; 4" and 6" S2000 is provided with 8-bolt hole flanged ends. 1 1/2" and 2" S2000 meters are also available with 2-bolt oval flanged ends. Both bronze and cast iron companion flanges are available. The companion flanges are faced, drilled and tapped with ANSI B2.1 internal taper pipe thread and conform to ANSI B16.1 cast iron pipe flange, Class 125.

### Registers and Pulse Outputs

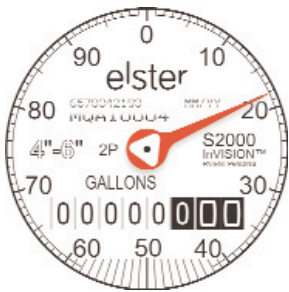
Meter Size	USG	1 Pulse Per CuFt
1 1/2"	10	1
2"	10	1
3"	10	1
4"	10	1
6"	10	1

### Dimensions and Net Weights

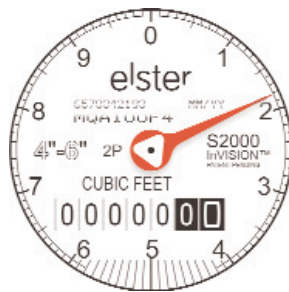
Meter Size	Dimensions (inches)							Weight (lbs)
	A	B	C	D	E	F	G	
1 1/2"	11.8	2.8	6.5	5.0	9.3	3.9	7.2	24
2"	11.8	2.8	6.5	5.0	9.3	3.9	7.2	32
3"	13.8	3.8	7.9	5.5	9.7	5.9	9.9	57
4"	13.8	4.4	9.0	5.9	10.2	7.9	12.4	95
6"	24	5.3	11	5.9	10.2	7.9	12.4	128



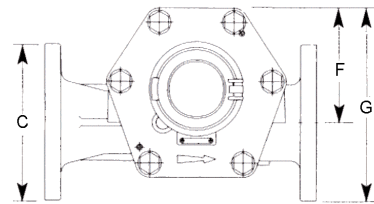
### Absolute Encoder Reading Options



Electronic Reading Resolution:  
100 USG  
for 1 1/2", 2", 3", 4", 6"



Electronic Reading Resolution:  
10 CF  
for 1 1/2", 2", 3", 4", 6"



Elster AMCO Water, Inc.  
PO Box 1852  
Ocala, FL 34478-1852  
United States

T +1 800 874 0890 (US)  
T +1 866 703 7582 (Canada)  
T +1 787 872 2006 (Caribbean)  
F +1 352 368 1950

watermeters@us.elster.com  
www.elster.com

© 2007 by Elster. All rights reserved.

The company's policy is one of continuous product improvement and the right is reserved to modify the specifications contained herein without notice. These products have been manufactured with current technology and in accordance with applicable AWWA Standards.