

# S130 Industrial Single-Jet Cold Water Meter

**Size: 3/4"**



<b>Size:</b>	<b>3/4"</b>
Min Flow (gpm) $\pm$ 5%	1/4
Low Flow (gpm) $\pm$ 2%	1
Recommended Continuous Flow (gpm) $\pm$ 2%	11
Peak Flow (gpm) $\pm$ 2%	22
Pressure Loss psi Min	0.1
Pressure Loss psi Low	0.5
Pressure Loss psi Cont	4
Pressure Loss psi Peak	13
Max Operating Pressure psi	150
Operating Temperature	104°F / 40°C
<u>Sweep Hand Register:</u>	
US Gallons	Red=x.1 Red=x 1 Red=x10
Cubic Meters	Red=x.001 Red=x.01 Red=x.1
<u>Capacity of Register/Pulser:</u>	
US Gallons (millions)	10
Cubic Meters (thousands)	100
<u>Contact/Closure (Pulser):</u>	
US Gallons	1 Contact/Gallon
Cubic Meters	1 Contact/1 Litre
<u>Materials:</u>	
Main Case	Brass
Top Plate	PPO-Glass-Loaded
O-ring	Rubber (Nitrile)
Impeller	Polyamide 12
Magnet	Ceramic (Ferrite)
Strainer	Polyacetal
Register	Plastic
Register Housing & Lid	Plastic
Reg Gearing & Number Wheels	Plastic
Lens	Polycarbonate High Impact
Pulser	Polycarbonate High Impact
Reed Switch	4 watt, 24 AC/DC voltage max., 0.2 Amp Current max., not to exceed 4 watts. Current limiting resistance in series with Reed Switch

**Operation.** The S130 (formerly 5UM-20) is a single-jet (inferential) impeller meter. The impeller movement is transferred by a magnetic coupling to the hermetically vacuum sealed register.

**Installation.** The meter must be installed in a clean pipeline, free from any foreign materials. The meter shall be installed with the direction of flow as indicated by the arrow cast in the meter case. The meter may be installed in horizontal or inclined lines, up to 45 degrees with the register facing upward. Note: The meter must have 10 pipe diameters ahead of the unit and 5 after of straight pipe to ensure proper flow through the meter. The meter is for use in cold water up to 104°F and working pressure to 150 psi. Both pressure loss and accuracy tests are made before shipment. No adjustments need be made before installation.

**Construction.** The meter consists of the main case and a register pulser assembly. The main case is cast brass with raised characters showing direction of flow. The top plate is made of PPO-Glass-Loaded and secured by a closing nut made of Polyacetal-Glass-Loaded



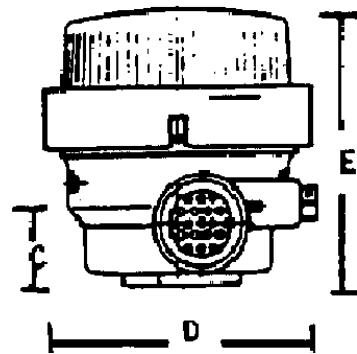
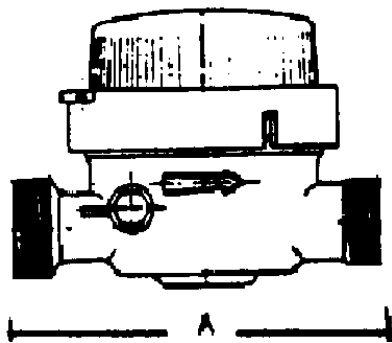
which is threaded into the main case, sealed by the O-ring gasket. The main case is designed to house the impeller/magnet and transfers the flow to the register pulser. The register pulser is positioned to the top plate with expansion dowel pins and secured by a clamp made of Polyamide with a threaded securing pin and nut.

**Register.** The register is dust and waterproof evacuated (no condensation caused by variation of temperature). The register is stationary and cannot be moved.

**Pulser.** The pulse unit consists of a clear housing with a register and cable exiting from the side of the register. The pulse element is a dry contact reed switch rated at 4 watts. This unit requires power from an external source and normally is wired in series with no regard to polarity. The unit has approximately 5 feet of 2-wire shielded cable exiting a sealed fitting. Note: The pulse unit cannot be repaired, however, the pulser can be replaced.

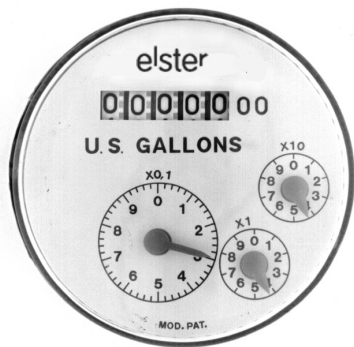
**Connection.** The meter casing spuds have external straight threads conforming to ANSI B.1. Bronze coupling nuts and tailpieces are available. Add 5 1/8" to length for couplings.

**Pulse Wiring.** The pulse element is a 4-watt rated reed switch which requires power from an external source. The unit is to be wired in series with no regard to polarity.



**Dimensions and Net Weights**

Meter Size	A Length	C Center to Btm.	D Width	E Height w/Pulser w/o Cap	Pulser (lbs.)
3/4"	4.527	.787	3.25	3.500	1.75



USG Register/Pulser

Elster AMCO Water, Inc.  
 PO Box 1852  
 Ocala, FL 34478-1852  
 United States

T +1 800 874 0890  
 F +1 352 368 1950

watermeters@us.elster.com  
 www.elster.com

© 2007 by Elster. All rights reserved.

The company's policy is one of continuous product improvement and the right is reserved to modify the specifications contained herein without notice. These products have been manufactured with current technology and in accordance with applicable AWWA Standards.