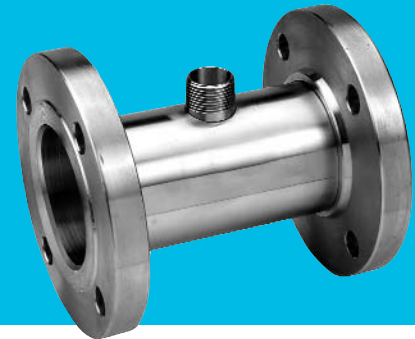


Stainless Steel Precision Meter

ANSI Flanged 150#

Size: 2" - 3"



Design Type	Turbine
Accuracy	+ - 0.5% of reading
Repeatability	+ - 0.1%
Temperature	-100°F to 225°F
Working Pressure	150 PSI
Bolt Pattern	4 bolt holes

Flow Range	2"- 33 to 330 GPM
	3"- 66 to 660 GPM

Material:

Body	316 Stainless Steel
Shaft & Bearings	Tungsten Carbide
Rotor	CD4MCu Stainless Steel

Typical K Factor:

2"	181
3"	50

Frequency Output:

2"	100 - 1000HZ
3"	50 - 500HZ

Available with:

- Two Wire Magnetic Pickup
- Preamplifier/MS-Connector/Cable Assy.
- Blind 4-20mA Output

Operation. The stainless steel Precision Meter is an inferential turbine type flow meter with a rotor. The fluid passes through the meter without a change in direction driving the rotor in direct proportion to the quantity of fluid passing through the meter.

Installation. This meter, like all turbine type meters, requires installation in a horizontal pipeline with 10 pipe diameters ahead and 5 after the meter of straight pipe the same size as the meter. A full pipe of fluid is also required.

Construction. The meter body is 316 stainless steel with tungsten carbide shaft/bearings and a stainless steel rotor. A magnetic pickup is actuated by the rotor, which transfers a specific K factor to one of three output devices: two wire pickup, pre-amplifier, or blind 4-20 mA output.

Applications. #2 thru #4 fuel oils when greater flow rates are required than can be delivered from our positive displacement oil meters. Refer to the chemical compatibility chart for additional application.



Dimensions: ANSI Flanged - Inches

Size	Length (mm)	Height (mm)	Weight (lbs)
2"	6.50 (165)	3.00 (76)	18.295
3"	10.00 (254)	3.75 (95)	*

*Call factory for updated information.

Output Options:

1. The Blind 4-20mA output option consists of the following components attached to the meter: Wire lead magnetic pickup and 4-20mA-output module. 11.6 to 40V DC power required
2. The pickup and cable assembly option is for individuals who can supply sine wave frequency signal from the magnetic pickup directly into their own display, computer, PLC, SCADA system, etc. The options consist of: Standard magnetic pickup, Connector, 10ft weather proof cable.
3. The pickup with pre-amp option provides a stronger signal less susceptible to interference from external electromagnetic energy. The pre-amp output is a square wave signal from 9-30 VDC depending on supply voltage.

The signal is compatible with assortments of indicators, displays and controls that the user may wish to use. The option consists of: Wire lead magnetic pickup, Pre-amp module threaded to the top of the meter.

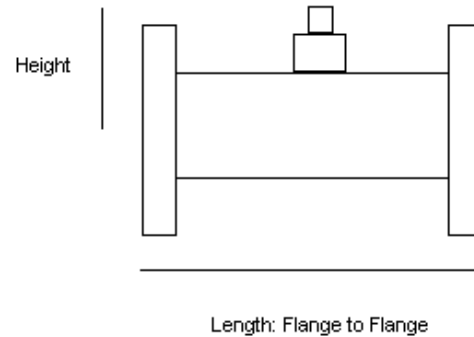
Connections

Companion flanges are not offered with the meter.

Maintenance

Rotor Kits are available for field installation. Meters do not need to be returned to Elster AMCO for repair of the rotor assembly.

Note: Chemical Compatibility Chart is also available for this meter.



Elster AMCO Water, Inc.
PO Box 1852
Ocala, FL 34478-1852
United States

T +1 800 874 0890
F +1 352 368 1950

watermeters@us.elster.com
www.elster.com

© 2007 by Elster. All rights reserved.

The company's policy is one of continuous product improvement and the right is reserved to modify the specifications contained herein without notice. These products have been manufactured with current technology and in accordance with applicable AWWA Standards.

IND-PM-ANSI/06-07