

Encoder or Digital Register with 60W/60WP Endpoint



Functional Specifications

Power Source:	Two "A" cell lithium batteries
Max. meter register pulse frequency:	3 Hertz
Operating Temperatures (endpoint):	-40°F to +158°F (-40°C to +70°C)
Storage Temperatures (endpoint):	-40°F to +167°F (-40°C to +75°C) for maximum of 1,000 hours
Humidity Limits:	0 to 100% (submersible)
Maximum Register Cable Dimension:	150 feet with Itron-approved cable and splice connectors

Transmission Parameters

Data Message:	Multiple RF channel transmission of meter register value, cut cable tamper, reverse-flow and system leak status messages broadcast every seven seconds
Transmitter Frequencies:	910-920 MHz @ +10 dBm (10 milliwatts)

Approved Reading Devices

Drive-by System:	Itron Mobile Collection System and Mobile Collector Lite
Walk-by System:	Itron G5R, FC200R and FC200SR Handheld Computers
Minimum versions:	MV-RS v7.7 (v7.8.6 for FC200SR), FCS v1.6 (v1.8 for FC200SR), PremierPlus4 v3.2 & Integrator v5.2

Approved Programming Devices

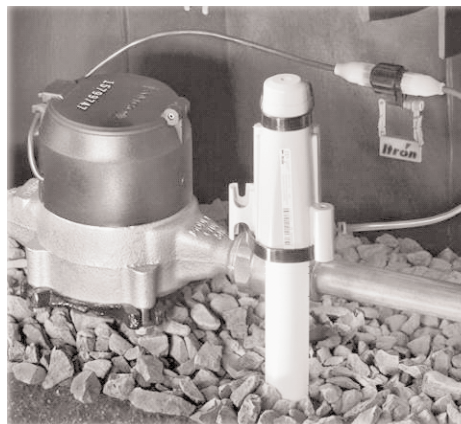
FC200SR with Endpoint-Link or Endpoint-Link Pro version 5.1 or higher software

Regulatory & Standards

FCC Part 15.247

The 60 Series Water Endpoint is compatible with encoded (60W) and pulse-generating (60WP) registers. The 60 Series works with Itron's current meter reading and host-processing software.

The 60 Series Water Endpoint includes integral mounting adaptations for installing the endpoint below compatible meter pit lids atop either standard-dimension fiberglass or reinforcing rod (re-bar), or attached to plastic PVC pipe by using common plastic cable ties. The 60 Series Water Endpoint can also be screw-fastened to flat surfaces or mounted through metal pit lids via a 1.75-inch hole by snapping on the optional pit lid adapter. Additionally, a shelf mount adapter is available for use with lids that contain a recessed cavity on the underneath side of the pit lid. The compact shape and optional in-line register cable connector make installations up to 25 feet from the water meter quick and easy. The 60W Series Water Endpoint requires no FCC license. No programming is required for the encoded model (60W). The pulse generating model (60WP) can be programmed with the use of Endpoint-Link® or Endpoint-Link Pro with a FC200SR (Super Raptor) handheld.



The 60 Series Water Endpoint utilizes 50 radio channels randomly selecting one channel for each data message. This multi-channel approach delivers improved reading performance over competing products by reducing the effect of interfering signals from other radio products. Additionally, Itron has increased the 60 Series Water Endpoint's radio frequency (RF) output power and employed an advanced antenna to further improve meter reading performance.

The 60 Series Water Endpoint's circuit assembly and battery pack are fully encapsulated within a specially-formulated potting material that completely protects internal components from water, contaminants, corrosion, rough handling and temperature cycling. With its simple design, the 60 Series Water Endpoint uses substantially fewer components than most competing products, resulting in lower overall service costs. The advanced, integrated antenna operates well under a wide range of meter box lids, effectively protecting the 60 Series Water Endpoint from lawn mowers, vehicle traffic and other hazards.

The 60 Series Water Endpoint's industry-leading battery life ensures your Automated Meter Reading (AMR) investment will achieve substantially better financial returns than competing products with batteries that typically last only 10 or 12 years. Additionally, the 60 Series Water Endpoint's advancements in leak, reverse flow (60W only) and tamper detection translate into fewer field investigations and substantially lower expenditures for installation, meter reading, customer service and field service.

Mounting Options

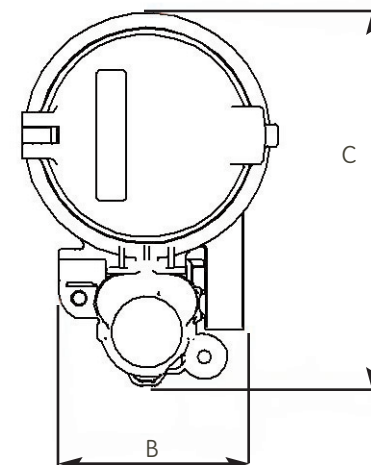
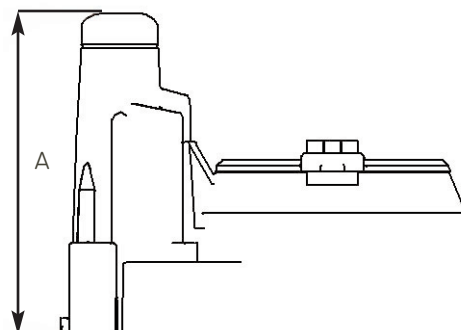
- Integral mount: Elster meters supplied with a glass lens register and polymer register cover. Integral mount utilizes a wireless, tamper proof design
- Rod-mount using standard 1/2" fiberglass or reinforcing rod (re-bar)
- Pit lid shelf-mount using snap on shelf mounting adapter
- Wall-mount to suitable backing material with user supplied mounting screws
- Through meter pit/box lids with optional snap-adapter and security clamp for 1.75" diameter holes up to 2.5" maximum lid thickness

Meter Compatibility (pit module)

- Elster Scancoder/InVISION (C700, M700, T3000, T4000, TS4000, C3000, C4000, S2000)
- Elster AquaMaster
- Actaris Cyble Coder
- Badger ADE
- Hersey Translator
- Metron Farnier OER
- Sensus ECR and ICE

Meter Compatibility (integral mount module)

- Elster InVISION:
 - C700 all sizes
 - M700 all sizes
 - T3000 1 1/2" thru 8"
 - T4000 1 1/2" thru 8"
 - C3000 2" thru 8"
 - C4000 2" thru 4"
- Elster Digital:
 - C700 all sizes
 - M700 all sizes
 - T4000 1 1/2" thru 8"
 - C4000 2" thru 4"



Dimensions (inches)

A	4.5
B	2.9
C	5.7

Elster AMCO Water, Inc.
PO Box 1852
Ocala, FL 34478-1852
United States

T +1 800 874 0890 (US)
T +1 866 703 7582 (Canada)
T +1 787 872 2006 (Caribbean)
F +1 352 368 1950

watermeters@us.elster.com
www.elster.com

© 2007 by Elster. All rights reserved.

The company's policy is one of continuous product improvement and the right is reserved to modify the specifications contained herein without notice. These products have been manufactured with current technology and in accordance with applicable AWWA Standards.